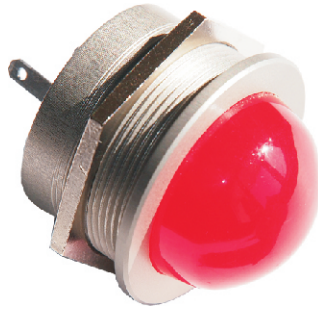




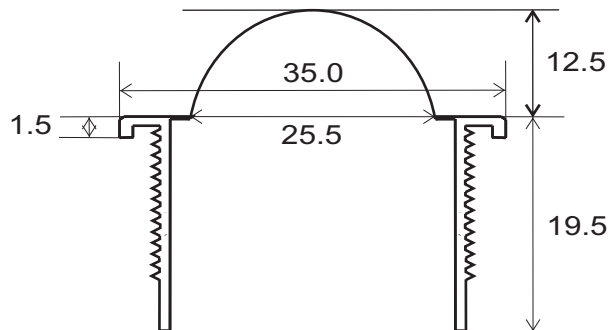
W. Schmid AG

LED-Technology
the visible difference

LED - Indicator WSF 35



WSF 35 - LED-Indicator, 5 - 380 VDC/ VAC



nut M30x1 / AF 34 mm
O-ring 1.5mm

- 30.5 mm mounting hole
- 25.5 mm colored or white opaque epoxy lens
- colorless or black anodized aluminum housing
- gas- and water proof
- vandal proof and acid resistant
- shock- and vibration resistant
- long life-time >50'000 hours
- variants of 5 VDC to 380 VAC available
- 115/230 VAC variants with integrated transformer or capacitor
- faston-, cable- or screw connectors available
- for use in the chemical industry, machine building, railways, mining or access control

Technical specifications

Color	Wavelength
red	624nm
yellow	589nm
green	522nm
orange	640nm
blue	465nm
white	X = 0.25 / Y = 0.27

Current consumption

20 mA (12/24 VDC), 10 mA (115 VDC/VAC), 20 mA (230 VAC), 4 mA (380 VAC)

Operating and storage temperature

-40 °C up to +85°C

Standard options

Series

WSF = LED Indicator convex

Diameter

35 = 35mm

Terminals

F = faston terminals 2,8 x 0,8mm

S = screw connectors

C = cable connection 1,2m

Color code

1 = red 6 = blue
2 = yellow 7 = white
3 = green 8 = red-green
4 = orange 136 = red-green-blue

Lens

C = colored

W = white opaque

Voltages

D = VDC 5 - 115 VDC

A = VAC 5 - 380 VAC

Housing

A = standard aluminum, hard anodized, colorless

B = aluminum anodized, black

N = nickel plated aluminum

C = chrome plated aluminum

Nut

M = metal nut, nickel plated brass

Ordering example

WSF35 F1 C24 DAM

LED Indicator WSF35, 35 mm diameter, faston terminals 2,8 x 0,8mm, red LED, red colored convex lens, 24 VDC, hard anodised colorless aluminum housing, metal nut M35x1, O-ring NBR 70



Upon request

- other voltages
- common anode
- other connections
- flashing LED
- other housing colors

Manufacturer

W. Schmid AG
Dorfstrasse 23
5442 Fislisbach
Switzerland

Tel: +41 56 470 00 77 Fax: +41 56 470 00 74

E-mail: sales@led-lamps.ch URL: <http://www.led-lamps.ch>