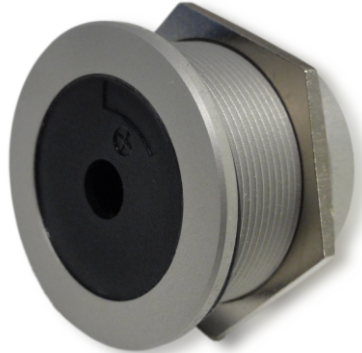




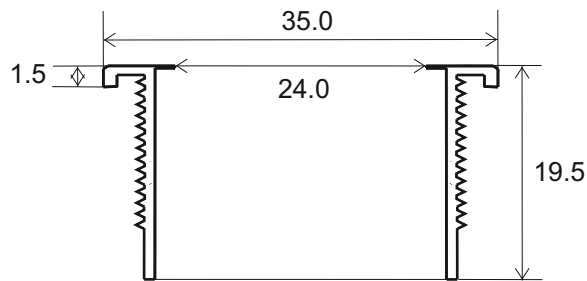
**W. Schmid AG**

LED-Technology  
the visible difference

## Piezoelectric buzzer PB35



Buzzer PB35



Fixing nut M30x1 / AF 35 mm  
O-Ring 1,5mm

Ø of mounting hole in panel:	30mm
Service voltages:	5/12/24/48 VDC
Sound level:	91 dB
Resonance frequency:	2.9 +/- 0.5 kHz
Operating temperature:	-20 up to +60 °C
Type of sound:	continuous tone, intermittent tone upon request
Electronics:	integrated
Housing:	colorless or black anodized aluminum
Terminals:	soldering tags/wires, faston or cable connection
Fixing nut:	plastic or metal hex nut M25x1mm
Scope of applications:	machine industry, construction of railway vehicles, mining industry, acces control systems etc.

### Manufacturer

W. Schmid AG  
Dorfstrasse 23  
5442 Fislisbach  
Switzerland  
Tel: +41 56 470 00 77 Fax: +41 56 470 00 74  
E-mail: [sales@led-lamps.ch](mailto:sales@led-lamps.ch) URL: <http://www.led-lamps.ch>