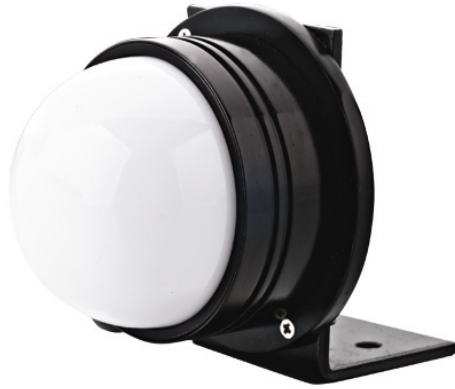




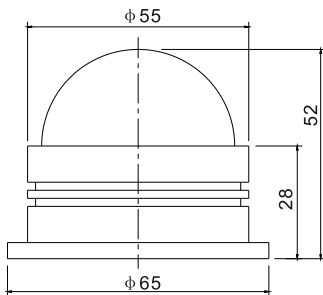
W. Schmid AG

LED-Technology
the visible difference

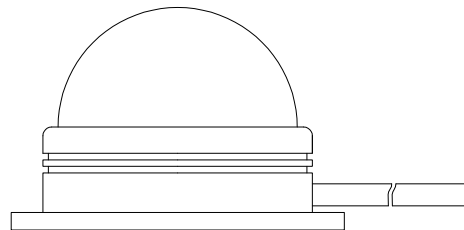
Surface mounted LED light ABL65C



ABL65C, 24 VDC



2 mounting holes \varnothing 3mm,
distance: 60mm
(2 mount. holes for angled bracket \varnothing 5mm,
distance: 24mm)



lateral cable outlet

Properties:

Description:	Surface mounted LED light type ABL65C, 65mm, convex
Dimensions:	\varnothing 65mm, H=52mm, angled mounting bracket 66x40mm
Supply voltage:	24 VDC
Power consumption:	3x0.5W
Viewing angle:	-
Degree of protection:	IP 65
Class of protection:	III
Operating temperature:	-25 up to +50°C
Material:	Black painted aluminium, cover in white polycarbonate
Weight:	0.2kg
Connection:	Cable, length: 0.3-0.4m
Available ill. colours:	RGB, other colours upon request
Applications:	Signalling device, access control, machine light, wall lamp etc.